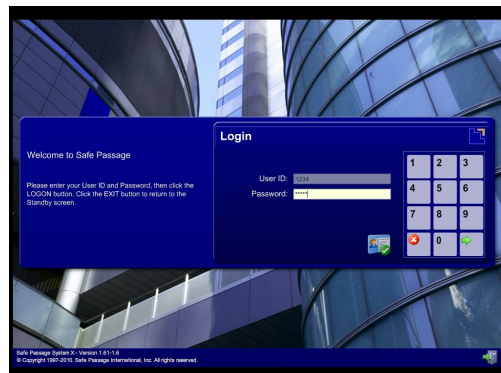




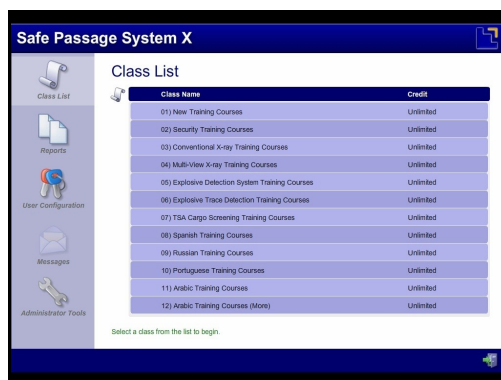
The Training Management System (TMS) is the foundation of the Safe Passage product line. It is a secure content delivery, grading, and training performance program that features automated collection, tracking, management, analysis, and interpretation of training data. When used in conjunction with Safe Passage training courses, users can launch and take courses, monitor their progress, and automatically send grade reports to instructors or administrators. The Training Management System is easy to use and allows for seamless integration of content-based courses and simulation-based courses.

Key Features & Benefits

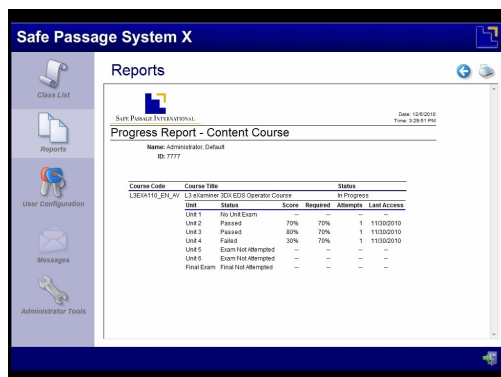
- Standard and consistent interface - After taking one course, users will know how to navigate through all other Safe Passage courses.
- Secure records management - Secure central storage and systematic control of training records, user accounts, and user access levels.
- Collects and manages user training data - Greatly reduces administrative workload and eliminates the risk of mistakes related to managing data.
- Provides performance tracking, reporting, and analysis - Algorithms determine which areas need improvement and future testing targets weakness areas. Accurate training reports available for viewing and printing.
- Customizable settings - Manage image libraries and adjust test parameters to meet local or government requirements.
- Expandable system - Seamlessly integrate additional tools and courses to support specific training requirements and customization.
- Flexible system - Available to run as a stand-alone or network program. Supports multiple delivery methods (CD, LAN, and Internet).
- SCORM compliant - Consistent with technical standards.



Log-in Screen



Class List



Reports



Components

Class List - Users can access all available training classes and personalized training assignments. Each training class has a simple progress monitor so users can track their learning.

Reports - Users can monitor their progress and view on-screen reports detailing their training history. At any given moment, users can see what they have completed and what they still need to do.

Messages - Users can ask for help by sending an electronic message to the instructor using an electronic messaging system. The system automatically records where the user is in the course and sends that information to the instructor.

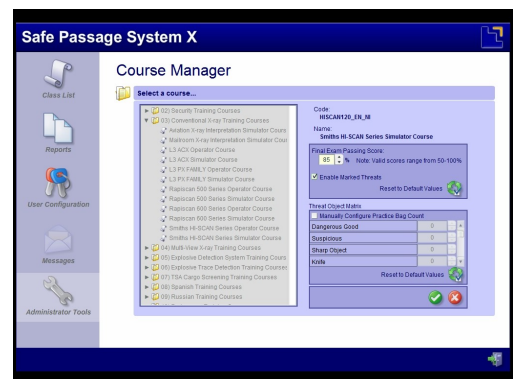
User Configuration - For added security, users can create their own private passwords. Users can also manage other information about their profile including contact information and address.

Administrator Tools - Users with administrator or instructor level privileges can access several configuration tools, which offer flexibility in configuring and administering courses.

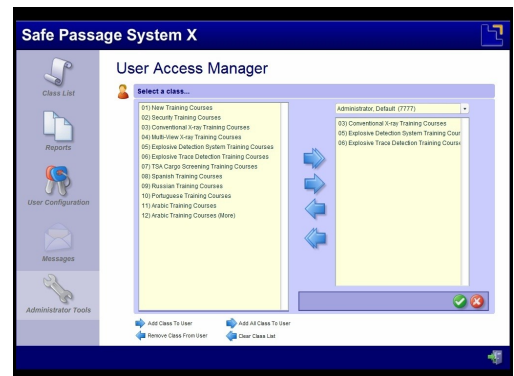
- *System Manager* - Customize the language and network data collection, and create separate data records for multiple companies.
- *Course Manager* - Enable or disable classes, set passing scores, configure the threat object matrix, and import files to support training.
- *User Manager* - Assign classes and create, edit, configure, and delete users and groups.
- *Report Manager* - Access and review simulator sessions and generate reports by course, group, or specific individuals.
- *Toolbox* - Import X-ray images, manage image libraries, and create custom bags, X-ray exams, and assignments. (Optional)



Administrator Tools



Course Manager



User Manager

Innovative Solutions. Superior Training. Accelerated Performance.

www.safe-passage.com

info@safe-passage.com

Corporate Headquarters
333 Metro Park
Rochester, New York 14623
UNITED STATES
Tel: +1 585 292 4910
Fax: +1 585 292 4911

ATS - Aviation Training & Services
Luiz Faccini, 416 - 2º floor -
Guarulhos - SP - Brazil
07110-000
Tel: +55 11 2229-8938
Cel: +55 11 96631-6965

